

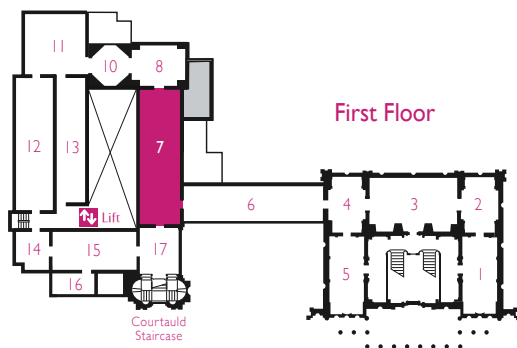
A guide for young people visiting the Fitzwilliam Museum either with their family or as independent visitors. It offers young people a taste of the collection in each of our main first floor galleries. With:

- Ideas on how to 'read' art
- Conversation starting points
- Connecting the collection with studies in Art, History, English, Religious Studies
- Themes to explore
- Creative practice

Information about our young people's programme:
www.fitzmuseum.cam.ac.uk/learning/youngpeople

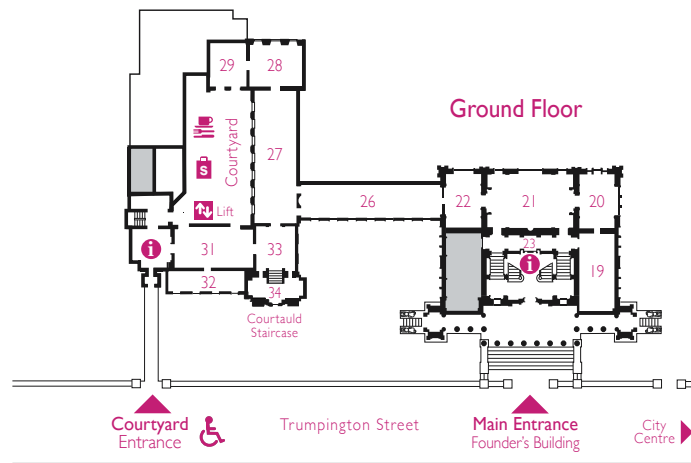
First Floor

- 1 British & European Art 19th-20th centuries
- 2 British Art 19th century
- 3 British Art 16th-18th centuries
- 4 French Art 17th-19th centuries
- 5 French Art 19th-20th centuries
- 6 Italian Art 14th-16th centuries
- 7 Italian Art 16th-18th centuries
- 8 Spanish & Flemish Art 16th-18th centuries
- 10 Octagon Gallery
- 11 The Arts of the 20th century
- 12 Adeane Gallery
- 13 Mellon Gallery
- 14 Shiba Gallery
- 15 Dutch Art 17th-18th centuries
- 16 Charrington Print Room
- 17 Flower Paintings



Ground Floor

- 19 Egypt
- 20 Egypt
- 21 Greece & Rome
- 22 Cyprus
- 23 Ancient Near East
- 25 Founder's Library
- 26 European & Japanese Porcelain
- 27 European Pottery
- 28 The Arts of the Far East
- 29 The Arts of Korea
- 31 Armoury
- 32 Medieval & Renaissance Art
- 33 The Arts of the Near East
- 34 Sasakawa Fan Gallery



The
Fitzwilliam
Museum
CAMBRIDGE

Cover image: Salvator Rosa (1615-1673), *L'Umana Fragilità* (detail)
 © The Fitzwilliam Museum, University of Cambridge



Supported using public funding by
ARTS COUNCIL ENGLAND

GALLERY 7

ART GUIDE FOR TEENS

A GALLERY INTRODUCTION



The
Fitzwilliam
Museum
CAMBRIDGE

KEY IDEAS

The fragility of life • Christianity • Classical scenes • Architecture

Artists you like in this gallery

Art materials and techniques used

TALKING POINTS

Identify the main characters in this painting.

There are many symbols in this painting associated with death. See if you can find some of these:

fish • hippopotamus • carved heads
bubbles • fireworks • knife • owl
weeds • faded flowers

There are two small butterflies located by the skeleton's knee. The butterfly is often used in Christian art to symbolise the soul's eternal life in heaven. The artist Rosa added these as a glimmer of hope to this tragic scene; the souls of the woman and her child will pass up to heaven.

SKETCH UP

Draw a set of studies of the skull, the skeleton's hand and wing.

Try using a range of HB, 2B and 4B pencils to create light and tone.

WORD UP

Create a word moodscape, here are a few to get you started: **beauty, gothic, gloomy, faded, knowing, hope, spirit...** put your selected words into either the skull or butterfly on the next page.

BACK IN YOUR STUDIO

Montage and collage, using cuttings of people from magazines. Replace the images of these figures' head and hands with your own drawn skulls and skeleton hands, if you like add some wings. Experiment with acrylic brush pens and markers, or paints and fine brushes for details. You could stick these collaged images onto a canvas or mount board and extend your artwork out into a larger scene.

NOTEPAD

WORD
MOODSCAPES

