



A gift for the future

Helping The Fitzwilliam Museum

Preserving what you value

A Message from the Director



The Fitzwilliam Museum owes its very existence to a legacy; in 1816 Richard, 7th Viscount Fitzwilliam bequeathed his collection of pictures, books and manuscripts to the University of Cambridge 'for the increase of learning and other great objects of that noble foundation'. He also provided the capital which built and endowed the 'good, substantial museum repository' he prescribed under the terms of his will.

Times have changed, but two hundred years later the Fitzwilliam Museum remains committed to 'the increase of learning', albeit in ways which are relevant to the twenty-first century. Free entry and full access, both physically and intellectually, to the collections are fundamental to that commitment. But museums today cannot afford to remain static repositories; we must grow and reach out to widen participation. To do so effectively we rely, as we always have done, on private support. Gifts and bequests over the past two centuries have enabled the Fitzwilliam to build on the foundations of its first, defining legacy to become one of Europe's finest museums; with collections second to none, highly regarded in the sector for the high standards it sets in conservation and curatorial services, and increasingly popular with the public for the range and quality of its educational and recreational programmes.

I hope you will take a few moments to read through this brochure which explains how you can support the Fitzwilliam Museum in the future, by following in the footsteps of Richard Fitzwilliam (1816), Charles Brinsley Marlay (1912), Paul Mellon (1999) and hundreds of other benefactors to whom we are so much indebted.

A Message from the Chairman of the Fitzwilliam Museum Development Trust

The Fitzwilliam Museum Development Trust is an independent charity founded in 1984, which serves as a channel for those who wish to give the Museum financial support.

Its President is HRH Princess Alexandra and its Trustees include the Director of the Museum and the Chairman of the Syndicate, which supervises the Museum on behalf of the University, together with a number of individuals who have agreed to lend their experience and connections to the Museum. They are well placed either to follow the wishes of benefactors or to exercise their judgment in deciding how legacies and donations can be used to the greatest advantage of the Museum and its collections.



Including The Fitzwilliam Museum in your Will

By making a legally correct Will you can ensure that your estate is allocated according to your wishes. You can provide for surviving family members, friends and the good causes you wish to support. Bequests to charitable organisations may also reduce the capital tax liability on your estate if its value exceeds the Inheritance Tax threshold. Your tax adviser will be able to explain this.

There are numerous ways in which you can support the Fitzwilliam Museum. If you are interested in giving or bequeathing works of art, we recommend that you contact the Director in the first instance, who will be able to advise on the most tax-efficient way of making either a lifetime gift or a bequest. Similarly we advise you to contact the Director if you are considering other forms of non-monetary donations such as property, shares or other valuables, which may be sold to benefit the museum.

Types of bequests

There are several different kinds of bequests:

A Pecuniary Bequest allows you to give a specific sum of money, which may be linked to the Retail Price Index.

A Residuary Bequest is a gift of the whole or part of your estate after other bequests to family and friends have been made and expenses have been met.

A Reversionary Bequest involves leaving all or part of your assets to Trustees so that family members or other beneficiaries can enjoy the income during their lifetimes, with all or a portion of the capital growth to the Museum after their deaths.

A Conditional Bequest leaves all or part of your estate to a person or persons but in the event that they die before you, the bequest would come to the Museum.

It is of course possible to combine different types of bequests in a single Will when it is first drawn up, or to add one or more later by attaching a codicil to an existing Will.

Appreciating your support

In gratitude for your support your name will be recorded in our Memorial Book of Thanks on public display in the museum. Names of major contributors, making donations of £10,000 and above, are also recorded on the walls of the museum.

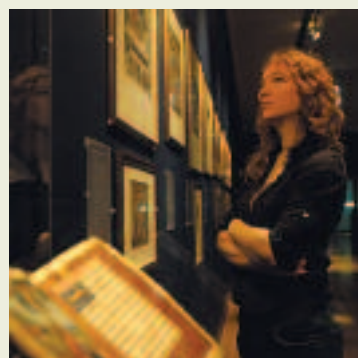
Investing in the future

By including the Fitzwilliam Museum in your Will, you will be joining generations of benefactors who have sustained its growth and development for nearly two hundred years. Your legacy will help to ensure its future success.

A bequest made in general terms offers the Museum the greatest flexibility with the ability to apply funds in the areas of greatest need. On the other hand you may wish to support particular areas of activity within the Museum such as conservation, education, information technology or research.

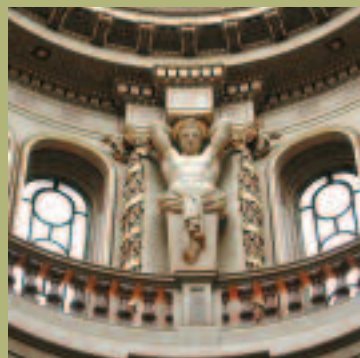
For detailed information on all Museum activities visit our website at: www.fitzmuseum.cam.ac.uk

Making a difference



‘Cambridge is unique in having a museum of such range and quality at its disposal. As a basis for research and disseminating knowledge, it is hard to think of a better collection.’

Paul Binski, Professor of History of Medieval Art, University of Cambridge



The Fitzwilliam Museum

If you would like further information about the Development Trust please contact:

The Development Officer
The Fitzwilliam Museum
Trumpington Street
Cambridge CB2 1RB UK
Tel: +44 (0)1223 332939

www.fitzmuseum.cam.ac.uk

Charity Reg No 291460

